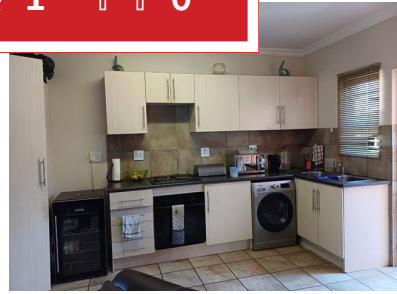
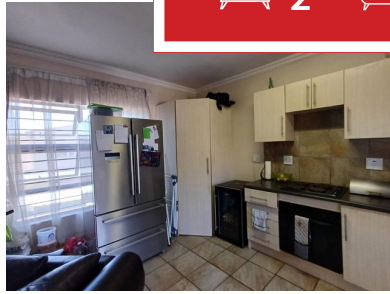


 **2**
 **1**
 **0**



A beautiful open plan apartment for the Gateway Monte Vista.

This unit is located on the 1st floor. It has a beautiful view of the town, not only does it have a great view but it also located closer to schools, filling stations shopping malls.

This unit has spacious rooms, open kitchen, spacious lounge and a bathroom that also provides you with both a shows bathtub.

Contact me before it's gone.

Monthly Bond Repayment

Calculated over 20 years at 11% with no deposit.

R7,534.98

Bond Costs

These calculations are only a guide. Please ask your conveyancer for exact calculations

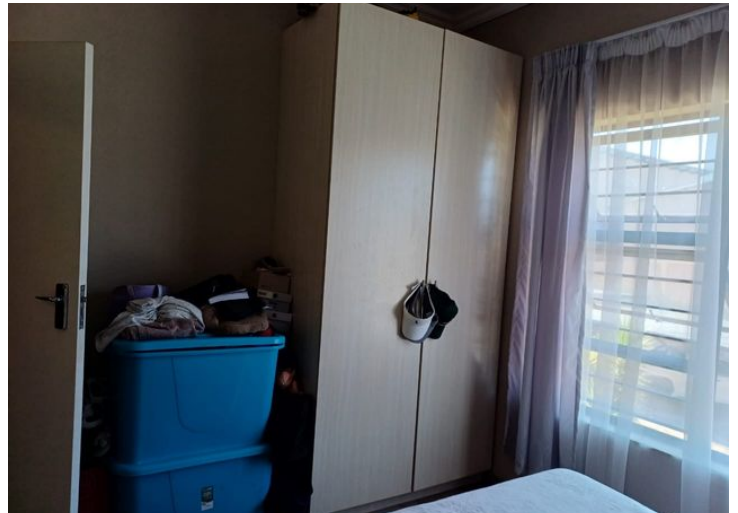
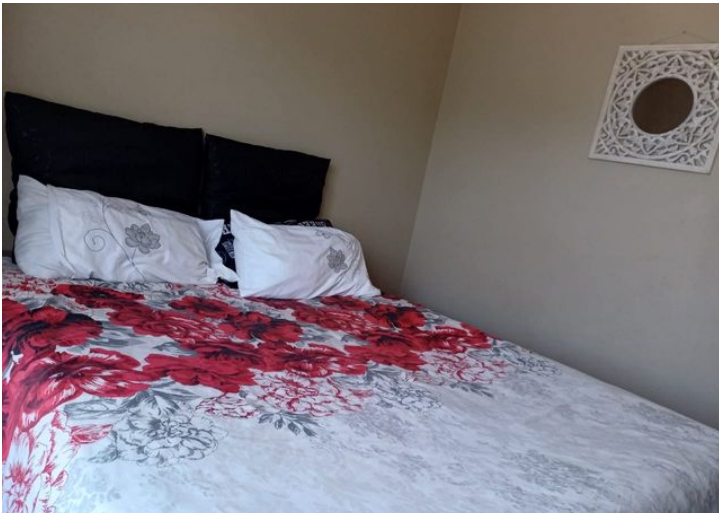
R19,565.00

Transfer Costs

R25,898.00

Monthly Rates

R1,500



INTERIOR

Bedrooms	2
Bathrooms	1
Kitchens	1
Recep. Rooms	2
Furnished	Yes

EXTERIOR

Carports / Parkings	1
Security	Yes
Dom. Accom.	0
Pool	Yes
Views	Yes

SIZES

Floor Size	70m ²
Land Size	-



Lourens Rautenbach

Broker Manager

076 316 4607

lourens@finehome.co.za