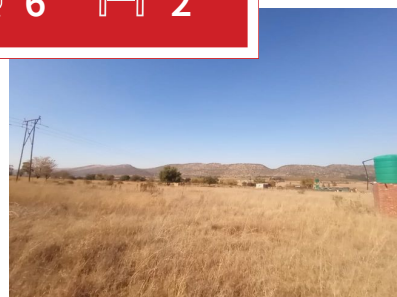
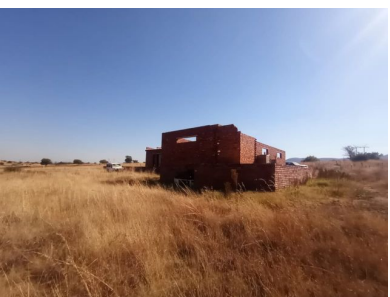




4 6 2



Charming 3.05 Ha Smallholding with Stunning Mountain Views in Rietfontein.

Discover the perfect blend of tranquility and potential with this exceptional 3.05-hectare smallholding, ideally situated in a secluded and peaceful area of Hartbeespoort. With stunning views of the surrounding mountains and proximity to essential amenities, this property offers a unique opportunity for those seeking a serene retreat with the potential for farming and sustainable living.

Key Features:

1. Partially Built House: The property includes a spacious 488-square-meter house, halfway built with durable walls. This solid structure provides an excellent foundation for new owners to complete and customize according to their preferences. The expansive floor plan allows for various possibilities, from a luxurious family home to a guesthouse or farming residence. Floor plans also made available in the pictures.

5. Nature Lover's Paradise: The surrounding natural beauty and mountain views make this property a haven for nature enthusiasts. Enjoy hiking, birdwatching, and other outdoor activities right at your doorstep, immersing yourself in the tranquility of the Hartbeespoort landscape.

Don't miss this unique opportunity to own a piece of paradise in Hartbeespoort. Contact us today to arrange a viewing and start envisioning your future on this exceptional smallholding.

Monthly Bond Repayment

Calculated over 20 years at 11%
with no deposit.

R15,276.39

Bond Costs

These calculations are only a guide. Please ask
your conveyancer for exact calculations

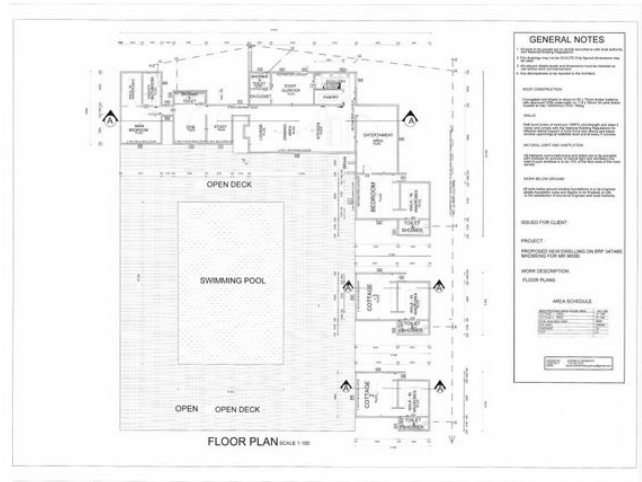
R28,990.00

Transfer Costs

R45,185.00

Monthly Rates

R500



INTERIOR

Bedrooms	4
Bathrooms	6
Kitchens	1
Recep. Rooms	3
Furnished	Yes

EXTERIOR

Carports / Parkings	0
Security	Yes
Dom. Accom.	1
Pool	Yes
Views	Yes

SIZES

Floor Size	488m ²
Land Size	3Ha



Lourens Rautenbach

Broker Manager

076 316 4607

lourens@finehome.co.za