

A beautiful spacious stand to build your new dream home.

This piece of land is one of three stands which can be bought for investment purposes of buying all three and making it a complex or building your dream home where no one in Harties is this close to the water and has a spectacular view.

Investing in land is one of the most rewarding decisions you can make, and this empty stand of land presents a unique opportunity. Located in a thriving community, this parcel is ideally situated near essential amenities such as schools, shopping centers, and parks, making it an attractive option for families and businesses alike.

This versatile piece of land offers endless possibilities. Whether you're looking to build your dream home, develop rental properties, or start a business, the location provides a solid foundation for your vision. The area is known for its steady growth, ensuring that your investment will appreciate over time.

Zoned for residential or commercial use, this land allows for various development options, catering to your specific

Monthly Bond Repayment

Calculated over 20 years at 11% with no deposit.

R18,527.78

Bond Costs

These calculations are only a guide. Please ask your conveyancer for exact calculations

R30,875.00

Transfer Costs

R60,739.00

Monthly Rates

R1,000



INTERIOR

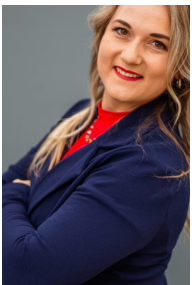
Bedrooms -
Bathrooms -
Kitchens -
Recep. Rooms 0
Furnished Yes

EXTERIOR

Carports / Parkings -
Security Yes
Dom. Accom. -
Pool Yes
Views Yes

SIZES

Floor Size -
Land Size 2,000m²



Yovanka Potgieter
Candidate Property Practitioner

062 449 6944
yovanka@finehome.co.za