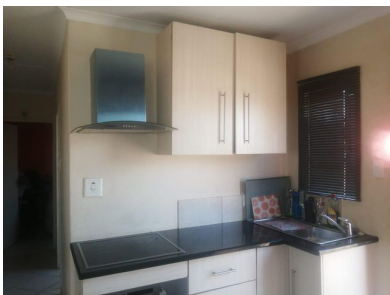




 **3**
 **2**
 **0**



This amazing family home is situated in Rivelea

This family home with a Spacious place offers

- 3 bedroom tiled floor ,blinds ,built-in Cupboards
- 2 bathroom tiled floor, separated toilet
- 1 family room tiled , curtain Rails , open plan
- 1 kitchen tiled floors, curtain Rails stove, fitted

close to all amenities

call now for viewing

Monthly Bond Repayment

Calculated over 20 years at 11%
with no deposit.

R8,463.94

Bond Costs

These calculations are only a guide. Please ask
your conveyancer for exact calculations

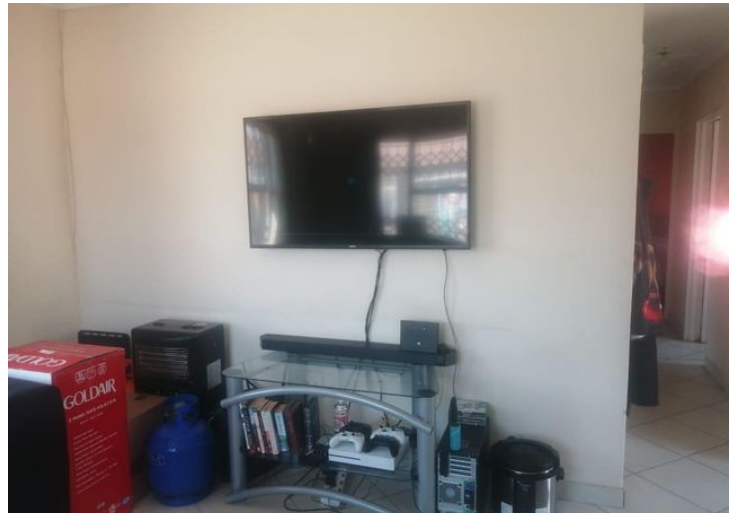
R21,450.00

Transfer Costs

R28,244.00

Monthly Rates

R800



INTERIOR

Bedrooms 3
 Bathrooms 2
 Kitchens 1
 Recep. Rooms 1
 Furnished Yes

EXTERIOR

Carports / Parkings 1
 Security Yes
 Dom. Accom. 0
 Pool Yes
 Views Maybe

SIZES

Floor Size -
 Land Size -



Lucricia Monama
 Candidate Property Practitioner

069 469 2409
 lucricia@finehome.co.za