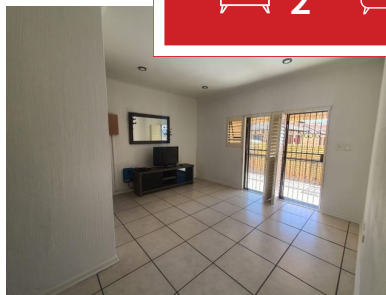




 2
  2
  0



Cosy and nice Unit in popular security complex in Chancliff Ridge

This ground floor Unit is well located within the complex and is fully walled.

a Low maintenance face brick finished Unit, with a open plan kitchen nook and lots of built in cupboards, linking a spacious lounge, leading onto a sunny patio.

There are two bedrooms and two clean bathrooms

The garden is landscaped and pet friendly

The ideal lock up and go Unit for someone entering the property market for the first time!

Rates and levies are reasonable and the Guard house complete the security aspects of this property

Monthly Bond Repayment

Calculated over 20 years at 11% with no deposit.

R9,857.40

Bond Costs

These calculations are only a guide. Please ask your conveyancer for exact calculations

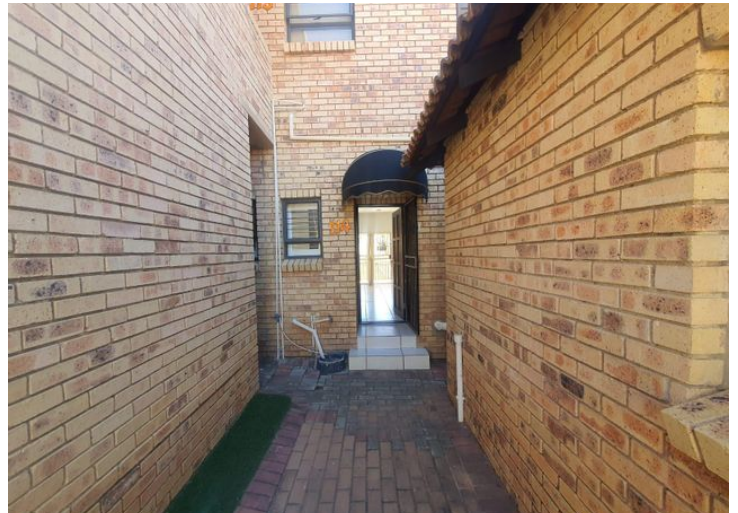
R23,335.00

Transfer Costs

R30,412.00

Monthly Rates

R923



INTERIOR

Bedrooms 2
 Bathrooms 2
 Kitchens 1
 Recep. Rooms 0
 Furnished No

EXTERIOR

Carports / Parkings 0
 Security No
 Dom. Accom. 0
 Pool Yes
 Views Maybe

SIZES

Floor Size -
 Land Size 25,300m²



Alf Prinsloo

Property Practitioner

Registered with PPRA (FFC 2023326287)

082 497 5435

alfjoeye@lantic.net



Joey Prinsloo

Property Practitioner

Registered with PPRA (FFC 2023326275)

084 602 8836

joey@finehome.co.za