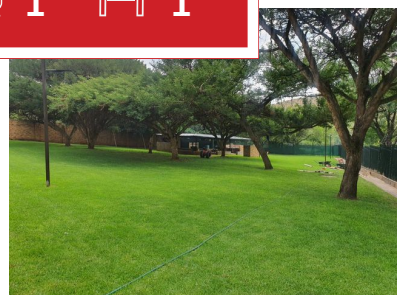
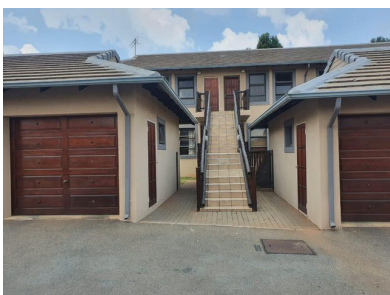


2 1 1



### Nice and cosy Simplex in a security complex

This two bedroom Unit is well situated in this complex which has a guardhouse and security desk.

It is very private with its own garden, and lock up garage.

The kitchen with a nook is open plan and also kinked to the very spacious lounge leading out into the garden.

a Full bathroom consisting of a shower, bath, toilet and basin is tiled and modern.

There are sufficient carports nearby this unut as well as lots of visitor's parking

This complex offers a seperate communal park for playing and braaiing with built in facilities. There are lots of lawns and it is a pet friendly complex

**Monthly Bond Repayment**

R9,238.09

Calculated over 20 years at 11% with no deposit.

**Bond Costs**

R21,450.00

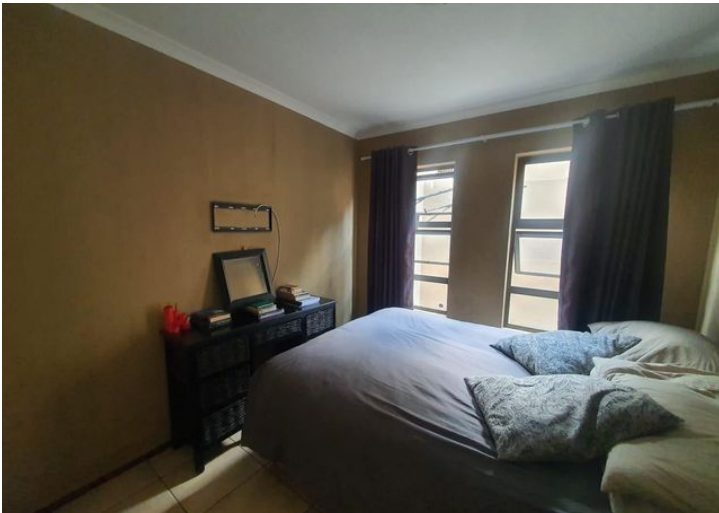
These calculations are only a guide. Please ask your conveyancer for exact calculations

**Transfer Costs**

R28,244.00

**Monthly Rates**

R892



### INTERIOR

Bedrooms 2  
 Bathrooms 1  
 Kitchens 1  
 Recep. Rooms 2  
 Furnished Yes

### EXTERIOR

Carports / Parkings 1  
 Security Yes  
 Dom. Accom. 0  
 Pool Yes  
 Views Yes

### SIZES

Floor Size 77m<sup>2</sup>  
 Land Size -



**Alf Prinsloo**

Property Practitioner

Registered with PPRA (FFC 2023326287)

**082 497 5435**

alfjoeye@lantic.net



**Joey Prinsloo**

Property Practitioner

Registered with PPRA (FFC 2023326275)

**084 602 8836**

joey@finehome.co.za