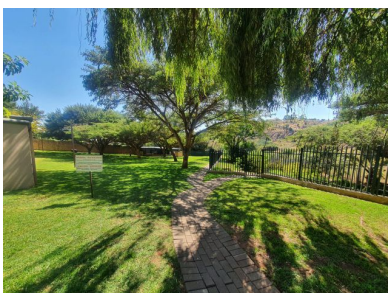
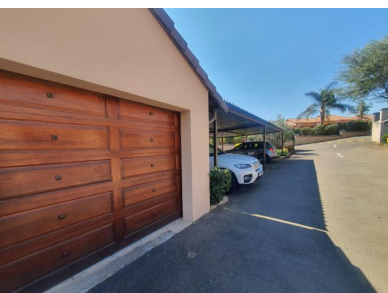


2 1 2



## Lovely simplex in upmarket security complex

This property is fully walled with own landscaped garden within the bigger complex.

The granite top kitchen with nook is open plan with lots of cupboards and links to the spacious lounge area which leads onto the patio.

The two bedrooms are of good size and the full bathroom has a bath, toilet, shower and basin.

Both garages are automated and the courtyard is private and secure.

There are also ample visitor's parking and additional carports could be hired if required

The complex offer huge open tranquil gardens and a large patio with built in braais for your entertainment. There is also a playpark for children.

The entrance to this complex is controlled with a guardhouse and on duty guards both day and night

### Monthly Bond Repayment

Calculated over 20 years at 11% with no deposit.

R10,115.45

### Bond Costs

These calculations are only a guide. Please ask your conveyancer for exact calculations

R23,335.00

### Transfer Costs

R30,412.00

### Monthly Rates

R559



### INTERIOR

Bedrooms 2  
 Bathrooms 1  
 Kitchens 1  
 Recep. Rooms 1  
 Furnished No

### EXTERIOR

Carports / Parkings 0  
 Security Yes  
 Dom. Accom. 0  
 Pool Yes  
 Views Maybe

### SIZES

Floor Size -  
 Land Size -



**Alf Prinsloo**

Property Practitioner

Registered with PPRA (FFC 2023326287)

**082 497 5435**

alfjoeye@lantic.net



**Joey Prinsloo**

Property Practitioner

Registered with PPRA (FFC 2023326275)

**084 602 8836**

joey@finehome.co.za