



 2
  2
  2



## Lovely simplex is secure complex in upmarket area

This low maintenance face brick Unit is well situated within this security complex and is fully walled. It is also close to all other amenities

The open plan kitchen has a nook and links to a spacious lounge reception, leading onto a patio with a landscaped garden. There is also a courtyard and it is pet friendly.

There are two bedrooms and two nice bathrooms.

Both garages has roll up doors and the carport is big enough for two vehicles.

Contact me today and I would set up your viewing appointment!

### Monthly Bond Repayment

Calculated over 20 years at 11% with no deposit.

R12,386.26

### Bond Costs

These calculations are only a guide. Please ask your conveyancer for exact calculations

R25,220.00

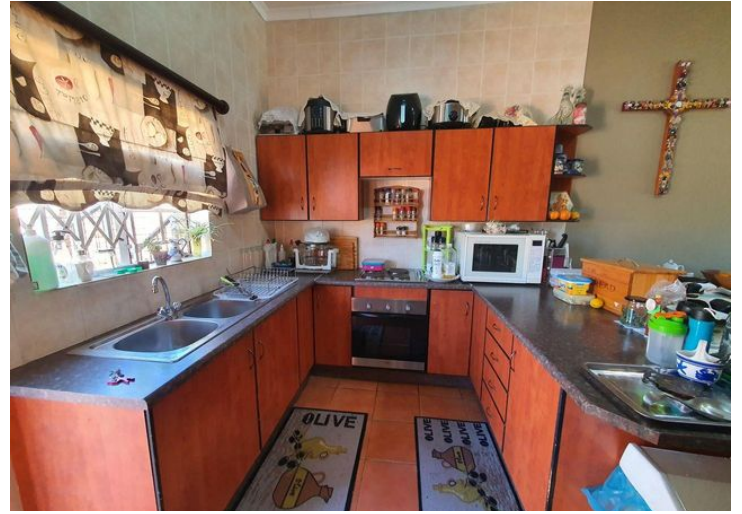
### Transfer Costs

R32,749.00

### Monthly Rates

R800





## INTERIOR

Bedrooms 2  
 Bathrooms 2  
 Kitchens 1  
 Recep. Rooms 0  
 Furnished Yes

## EXTERIOR

Carports / Parkings 0  
 Security Maybe  
 Dom. Accom. 0  
 Pool Yes  
 Views Maybe

## SIZES

Floor Size -  
 Land Size -



**Alf Prinsloo**

Property Practitioner

Registered with PPRA (FFC 2023326287)

**082 497 5435**

alfjoeye@lantic.net



**Joey Prinsloo**

Property Practitioner

Registered with PPRA (FFC 2023326275)

**084 602 8836**

joey@finehome.co.za

