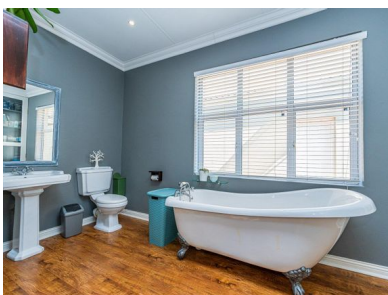


4
 3
 1



## Welcome To Your Forever Home

Step into a home that feels like a warm embrace—where modern sophistication meets old-world charm, and every detail has been thoughtfully crafted to create a haven for your family. Nestled within a lush green garden at the end of a quiet cul-de-sac, this 4-bedroom sanctuary is more than just a house; it’s a place to truly call home.

As you cross the threshold, the character of this home immediately captivates you. Pressed steel ceilings stretch above, exuding timeless elegance. The living lounge welcomes you warmly, with natural light dancing across the walls, inviting you to kick off your shoes and unwind.

Flowing seamlessly from the lounge, the heart of the home reveals itself—the kitchen. Practical yet stylish, it boasts ample cupboard space, perfect for shared moments like weekend baking or holiday feasts. A separate scullery and laundry room add functionality, keeping everything effortlessly tidy. Connected to the dining area, this space is ideal for family meals and gatherings.

Each room in the house tells its own story. Two of the bedrooms feature cozy fireplaces, perfect for chilly evenings. The

### Monthly Bond Repayment

Calculated over 20 years at 11% with no deposit.

R24,669.30

### Bond Costs

These calculations are only a guide. Please ask your conveyancer for exact calculations

R36,530.00

### Transfer Costs

R104,752.00

### Monthly Rates

R900





### INTERIOR

Bedrooms 4  
 Bathrooms 3  
 Kitchens 1  
 Recep. Rooms 0  
 Furnished Yes

### EXTERIOR

Carports / Parkings 0  
 Security Maybe  
 Dom. Accom. 0  
 Pool Yes  
 Views Maybe

### SIZES

Floor Size 348m<sup>2</sup>  
 Land Size 1,266m<sup>2</sup>



**Hanlie Eksteen**

Agent

**082 335 3268**

hanlie@finehome.co.za