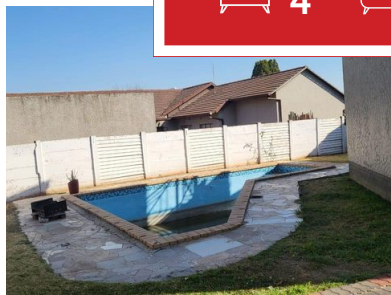
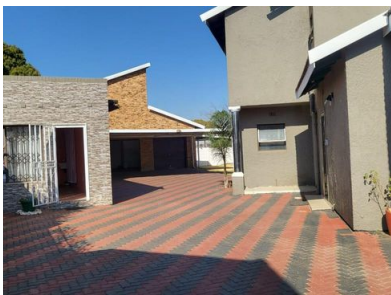




 4
  4
  2



LARGE FAMILY HOME FOR SALE .

This property offers 4 bedroom with built-in cupboards with all tiled floors.
 3.5 bathrooms, shower, basin, bath, toilet, laundry room with built-in cupboards..
 Open plan dining room area, lounge area and TV room with tiled floors.
 Study/work station
 Lovely kitchen with built-in cupboards.
 Flatlet on top of the garage , bedroom, shower, basin and toilet.
 Flatlet 1., bedroom, shower, basin and toilet.

Flatlet 2 storeroom at the back of the garage.
 Double carport and double garage with self contained cottage room that can be rented out to generate extra income.
 It has pool that is not in working condition.

Monthly Bond Repayment

Calculated over 20 years at 11%
with no deposit.

R17,031.11

Bond Costs

These calculations are only a guide. Please ask
your conveyancer for exact calculations

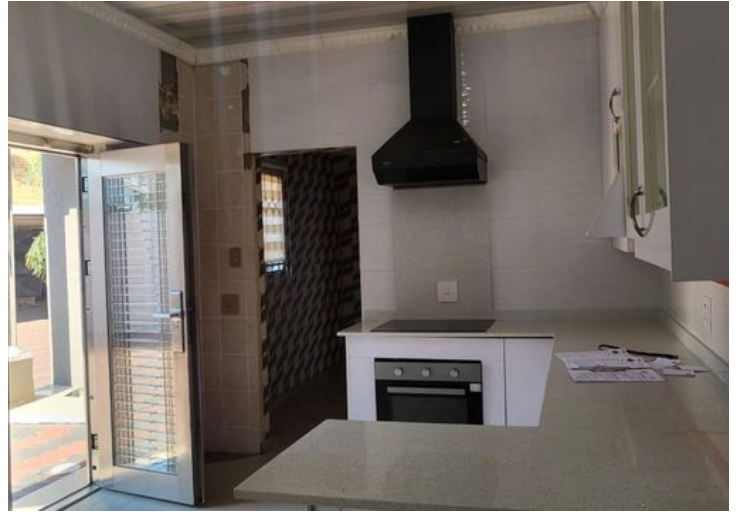
R30,875.00

Transfer Costs

R52,453.00

Monthly Rates

-



INTERIOR

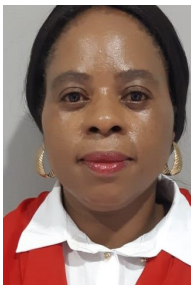
Bedrooms 4
 Bathrooms 4
 Kitchens 1
 Recep. Rooms 0
 Furnished Yes

EXTERIOR

Carports / Parkings 0
 Security Maybe
 Dom. Accom. 2
 Pool Yes
 Views Maybe

SIZES

Floor Size -
 Land Size 991m²



Dikeledi Mohlala
 Property Practitioner

073 077 2598
 dikeledi@finehome.co.za



Juliet Mxhakaza
 Candidate Property Practitioner

072 149 1015
 juliet@finehome.co.za

