

3 2 1



New listing! Loose standing simplex in secure complex in Noordheuwel

This house is a well located, low maintenance house close to most amenities. Consisting of an open plan kitchen and lounge/dining room. Three sunny bedrooms and two bathrooms with a bath and shower. Main en-suite. The garden is landscaped and private. There is a lock up garage and a carport with additional visitors parking in communal areas.

It is pet friendly and very secure with a guard house.

Monthly Bond Repayment

Calculated over 20 years at 11% with no deposit.

R11,870.17

Bond Costs

These calculations are only a guide. Please ask your conveyancer for exact calculations

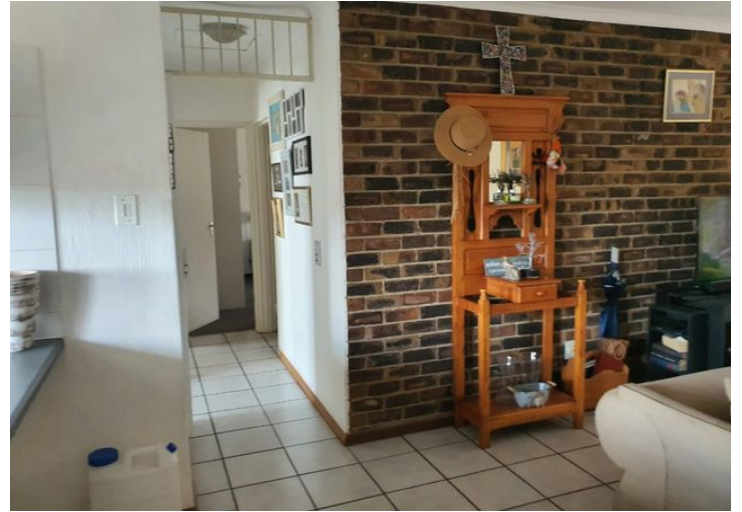
R25,220.00

Transfer Costs

R32,749.00

Monthly Rates

-



INTERIOR

Bedrooms 3
 Bathrooms 2
 Kitchens 1
 Recep. Rooms 2
 Furnished Yes

EXTERIOR

Carports / Parkings 1
 Security Yes
 Dom. Accom. 0
 Pool Yes
 Views Yes

SIZES

Floor Size -
 Land Size 231m²



Alf Prinsloo
 Property Practitioner

Registered with PPRA (FFC 2023326287)

082 497 5435
 alfjoeye@lantic.net



Joey Prinsloo
 Property Practitioner

Registered with PPRA (FFC 2023326275)

084 602 8836
 joey@finehome.co.za