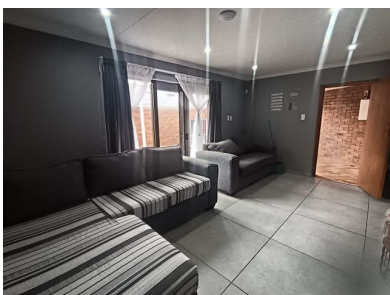




 **6**
 **6**
 **7**



## New on market! Huge low maintenance home for the bigger family in upmarket Noordheuwel .

This property is ideally suited for the real entertainer! Being a split level home, it creates lots of extra space in the already large property with 6 bedrooms and 6 bathrooms. All the reception rooms are spacious and open plan. The kitchen is well situated in the house with a full laundry and scullery, a pantry, gas Hob and there are ample built in cupboards and electrical connections for all your equipment and machinery. The garden is landscaped with a tranquil pool and comfortable patio to enhance your total enjoyment whilst entertaining your guests.

The flatlet is conveniently located with its own entrance and parking space. Potential income generator for the owner. The 7 garages are automated and the are servants quarters for your domestic workers.

This property is very secure with a full closed circuit tv system.

### Monthly Bond Repayment

R26,826.58

Calculated over 20 years at 11% with no deposit.

### Bond Costs

R38,415.00

These calculations are only a guide. Please ask your conveyancer for exact calculations

### Transfer Costs

R123,640.00

### Monthly Rates

R1,664



**INTERIOR**

Bedrooms 6  
 Bathrooms 6  
 Kitchens 2  
 Recep. Rooms 2  
 Furnished Yes

**EXTERIOR**

Carports / Parkings 2  
 Security Yes  
 Dom. Accom. 1  
 Pool Yes  
 Views Yes

**SIZES**

Floor Size 638m<sup>2</sup>  
 Land Size 1,587m<sup>2</sup>



**Alf Prinsloo**  
 Property Practitioner

Registered with PPRA (FFC 2023326287)

**082 497 5435**  
 alfjoeye@lantic.net



**Joey Prinsloo**  
 Property Practitioner

Registered with PPRA (FFC 2023326275)

**084 602 8836**  
 joey@finehome.co.za