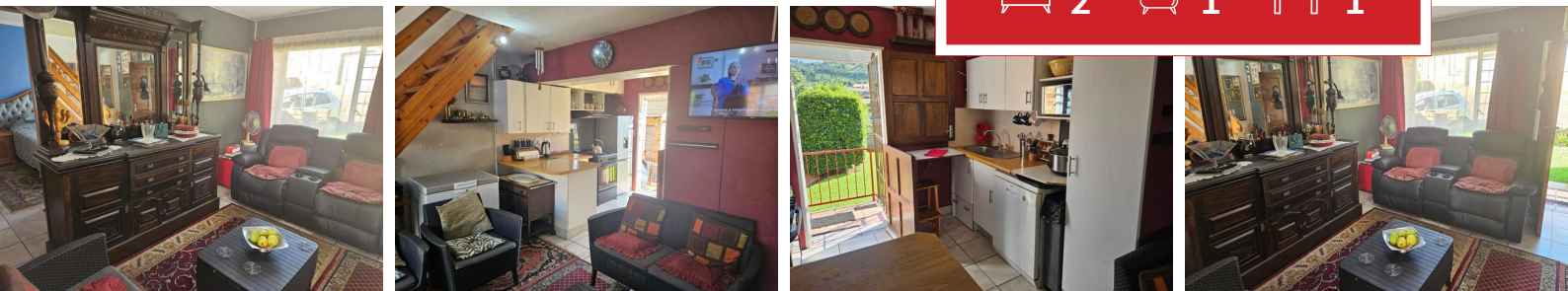


2
 1
 1



Lovely Townhouse in Sanbonani - Rangeview Extension 4

What to say about this well maintained Townhouse with lots of storage space.

Size of unit is 98 square meters.

This unit is move-in ready.

Open Plan Lounge, Kitchen, Dining.

Gas Hob for cooking should there be load shedding.

Tiled throughout.,

Main Bedroom has space for a Queen bed.

Lots of cupboards, a woman's dream.

Bathroom has a Bath, Shower, toilet, space for Washing Machine and Tumble Dryer.

Upstairs the Loft could be used as a Main Bedroom or 2nd bedroom.

Alternatively Study, Dining, office space, Play room.

Monthly Bond Repayment

Calculated over 20 years at 11% with no deposit.

R8,876.82

Bond Costs

These calculations are only a guide. Please ask your conveyancer for exact calculations

R26,152.00

Transfer Costs

R31,114.00

Monthly Rates

R806



INTERIOR

Bedrooms 2
 Bathrooms 1
 Kitchens 1
 Recep. Rooms 0
 Furnished No

EXTERIOR

Carports / Parkings 0
 Security No
 Dom. Accom. 0
 Pool Yes
 Views Maybe

SIZES

Floor Size 98m²
 Land Size -



Chris Maritz
 Broker Manager

071 350 4193
 christo@finehome.co.za



Elmarie Potgieter
 Agent

083 600 7037
 elmarie@finehome.co.za