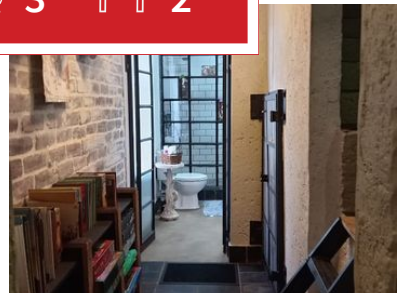


4 3 2



Welcome to this stunning 4-bedroom house that perfectly blends elegance and comfort

A spacious four-bedroom house with three bathrooms, two garages, two parking spaces, and a study—it has all the essentials for comfort, convenience, and style. Whether it's for a growing family or hosting guests, such a setup ensures everyone has their space. Plus, the study adds a perfect corner for productivity or a quiet escape.

Monthly Bond Repayment

R26,630.46

Calculated over 20 years at 11% with no deposit.

Bond Costs

R38,415.00

These calculations are only a guide. Please ask your conveyancer for exact calculations

Transfer Costs

R122,120.00

Monthly Rates

R2,517



INTERIOR

Bedrooms 4
 Bathrooms 3
 Kitchens 1
 Recep. Rooms 2
 Furnished Yes

EXTERIOR

Carports / Parkings 2
 Security Yes
 Dom. Accom. 1
 Pool Yes
 Views Yes

SIZES

Floor Size -
 Land Size -



Pumla Ndabeni
 Candidate Property Practitioner

076 400 1569
 pumla@finehome.co.za



Tumi Molefe
 Candidate Property Practitioner

072 064 0567
 tumi@finehome.co.za

