

3 2 2



Stunning Family Home with Braai Lapa in a Sought-After Neighborhood

Welcome to your dream home. This charming property is located in one of the most desirable neighborhoods, offering not only a beautiful residence but also an incredible entertainment space. Perfect for families, social gatherings, and those who love to entertain.

A spacious living room and dining area, ideal for family gatherings.

Modern appliances, ample storage, and a breakfast nook. Enjoy the heart of your home with a fantastic outdoor braai lapa. Featuring comfortable seating, perfect for braai and entertaining friends and family year-round.

A well-maintained garden with plenty of space for kids and pets to play.

Family-friendly atmosphere with parks and playgrounds nearby Close to excellent schools, shopping centers, and recreational facilities.

Safe and secure community with a strong sense of camaraderie among residents.

Monthly Bond Repayment

Calculated over 20 years at 11%
with no deposit.

R17,753.64

Bond Costs

These calculations are only a guide. Please ask
your conveyancer for exact calculations

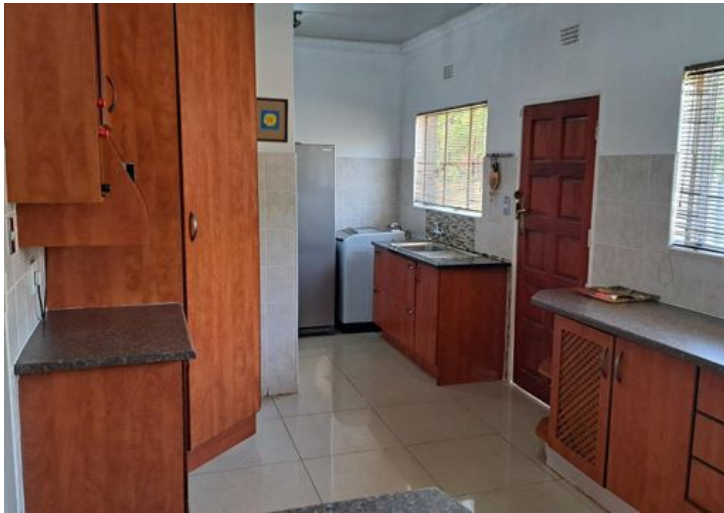
R30,875.00

Transfer Costs

R56,239.00

Monthly Rates

R1,450



INTERIOR

Bedrooms	3
Bathrooms	2
Kitchens	1
Recep. Rooms	0
Furnished	Yes

EXTERIOR

Carports / Parkings	0
Security	Maybe
Dom. Accom.	0
Pool	Yes
Views	Maybe

SIZES

Floor Size	-
Land Size	881m ²



Chris Maritz

Broker Manager

071 350 4193

christo@finehome.co.za

