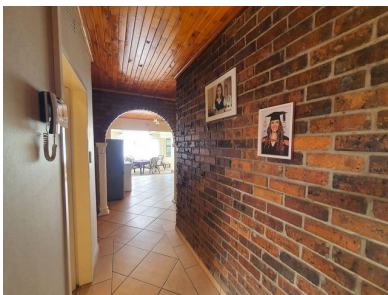
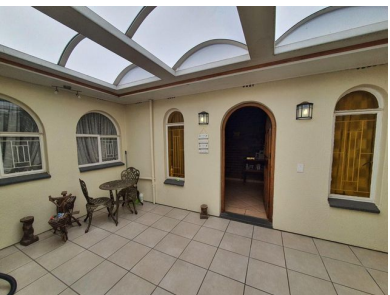




 3
  3
  2



Spacious family home in popular area.

This property is well situated and close to all amenities.

The garden is landscaped and tranquil and the pool is sparkling clean and inviting.

All the reception areas are open plan and spacious and there is a study and guest toilet.

a Nice kitchen with a nook and separate laundry also features lots of built in cupboards and electrical connection points for your machines etc.

The three bedrooms are nice and sunny and the bathrooms are full with shower, toilet, bath and basin.

There is a huge covered patio and verandah leading onto an open area stoep for entertainment purposes.

Monthly Bond Repayment

Calculated over 20 years at 11% with no deposit.

R26,320.80

Bond Costs

These calculations are only a guide. Please ask your conveyancer for exact calculations

R38,415.00

Transfer Costs

R119,720.00

Monthly Rates

R1,200



INTERIOR

Bedrooms 3
 Bathrooms 3
 Kitchens 1
 Recep. Rooms 0
 Furnished Yes

EXTERIOR

Carports / Parkings 0
 Security Maybe
 Dom. Accom. 0
 Pool Yes
 Views Maybe

SIZES

Floor Size -
 Land Size -



Alf Prinsloo
 Property Practitioner

Registered with PPRA (FFC 2023326287)

082 497 5435
 alfjoeye@lantic.net



Joey Prinsloo
 Property Practitioner

Registered with PPRA (FFC 2023326275)

084 602 8836
 joey@finehome.co.za

