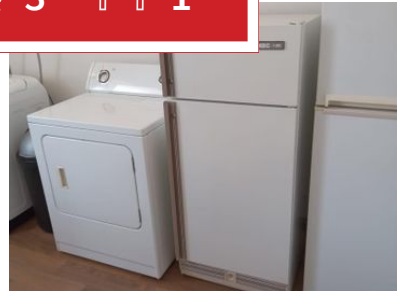
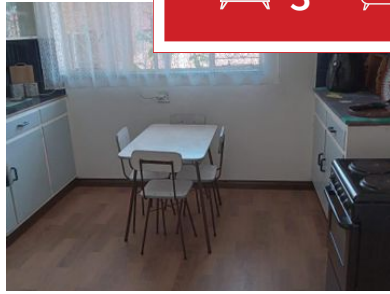




 **3**
 **3**
 **1**



## VERY NEAT LIVABLE HOME WITH BACHELORS FLAT

STURDY FAMILY HOME NEAR ALL AMENITIES OFFERS AN ENTRANCE AREA, 3 BEDROOM, 2 BATHROOM, SEPARATE TOILET, DINING ROOM, LOUNGE WITH FIREPLACE, KITCHEN WITH LAUNDRY AND AN ENTERTAINMENT AREA THAT MAY BE CHANGED INTO A GUEST BEDROOM.

OUTSIDE WE FIND A BRAAI AREA, 1 GARAGE, STORE ROOM, BACHELORS FLAT, DOGGY HOUSE AND NICE GARDEN. PROPERTY HAS AN ALARM SYSTEM AND IS TOTALLY WALLED WITH SECURE GATE.

### Monthly Bond Repayment

Calculated over 20 years at 11% with no deposit.

R12,799.14

### Bond Costs

These calculations are only a guide. Please ask your conveyancer for exact calculations

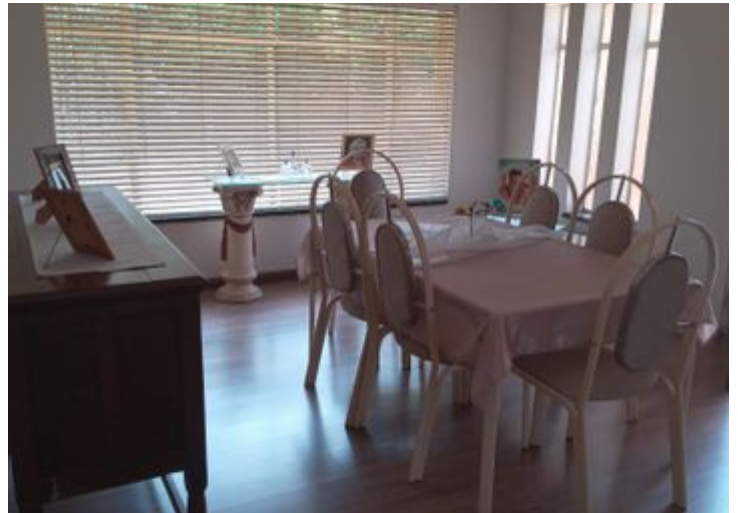
R27,105.00

### Transfer Costs

R35,817.00

### Monthly Rates

R1,750



### INTERIOR

Bedrooms	3
Bathrooms	3
Kitchens	1
Recep. Rooms	2
Furnished	No

### EXTERIOR

Carports / Parkings	1
Security	Yes
Dom. Accom.	0
Pool	Yes
Views	No

### SIZES

Floor Size	954m <sup>2</sup>
Land Size	-



**Silindile Khumalo**

Agent

**084 762 2375**

[silindile@finehome.co.za](mailto:silindile@finehome.co.za)