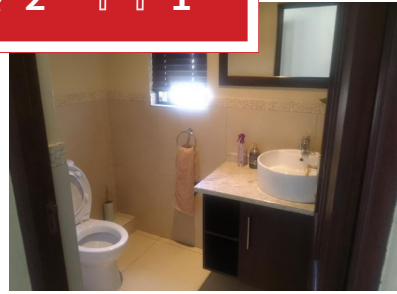
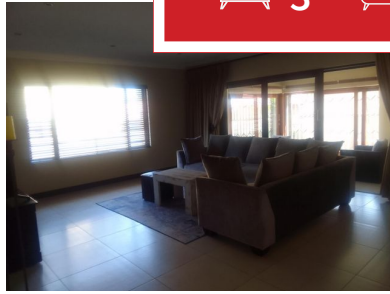
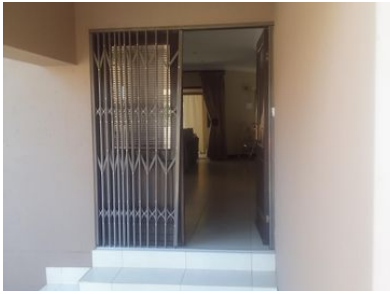




3 2 1



MORDEN Family home for sale in HONEYDEW MANOR

Spacious 3 bedrooms with built-in cupboards ,ensuite bathroom with shower, toilet and basin. Open plan lounge and dining area, lovely kitchen with built in cupboards, washing machine connection and dishwasher connection. Double garage and pets friendly. This property is in a security tight estate

Monthly Bond Repayment

R28,901.27

Calculated over 20 years at 11% with no deposit.

Bond Costs

R40,300.00

These calculations are only a guide. Please ask your conveyancer for exact calculations

Transfer Costs

R141,887.00

Monthly Rates

R2,366



INTERIOR

Bedrooms 3
 Bathrooms 2
 Kitchens 1
 Recep. Rooms 2
 Furnished No

EXTERIOR

Carports / Parkings 2
 Security Yes
 Dom. Accom. 0
 Pool Yes
 Views Maybe

SIZES

Floor Size 192m²
 Land Size 404m²



Lufuno Ngoma
 Candidate Property Practitioner

076 104 3290
 lufuno@finehome.co.za