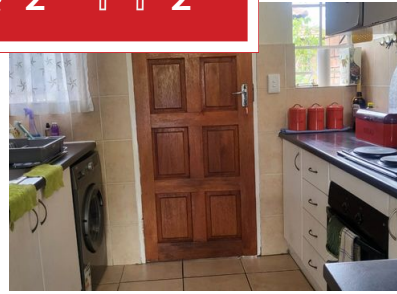
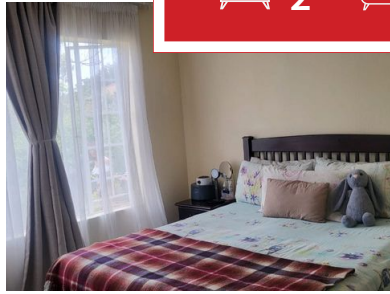




 2
  2
  2



STUNNING 2 BEDROOM TOWNHOUSE FOR SALE IN HONEYDEW MANOR.

By entering the complex welcome by well maintained neat complex with double automated garages and well kept garden .

This unit is pet friendly.

Open plan plan kitchen with built-in cupboards with lounge all tiled floors .

Its offers 2 bedrooms with built-in cupboards both carpet flooring.

2 bathroom,shower.bath,basin and toilet.

The complex is close to all amenities and very secure complex.

For private viewing whatsapp me.

Monthly Bond Repayment

Calculated over 20 years at 11% with no deposit.

R8,876.82

Bond Costs

These calculations are only a guide. Please ask your conveyancer for exact calculations

R21,450.00

Transfer Costs

R28,244.00

Monthly Rates

-



INTERIOR

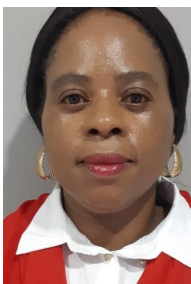
Bedrooms 2
 Bathrooms 2
 Kitchens 1
 Recep. Rooms 1
 Furnished Yes

EXTERIOR

Carports / Parkings 1
 Security Yes
 Dom. Accom. 0
 Pool Yes
 Views Yes

SIZES

Floor Size 190m²
 Land Size -



Dikeledi Mohlala

Property Practitioner

073 077 2598

dikeledi@finehome.co.za

