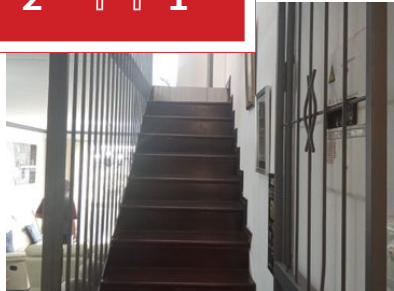




 2
  2
  1



Stunning Townhouse with Premium Finishes in the heart of Horison

Stunning Townhouse with Premium Finishes

Discover this beautifully upgraded duplex townhouse, featuring meticulous attention to detail and its own private garden, located in a well-maintained complex. The contemporary kitchen boasts new cabinetry, generous appliance space, and elegant granite countertops. Enjoy an open-plan living area where the layout is optimized, complete with a stylish bar tucked beneath the solid wooden staircase. Both bathrooms showcase exquisite finishes, while the spacious bedrooms feature laminate flooring. The main bedroom includes modern built-in wardrobes and a walk-in closet for added convenience.

This unit offers one undercover parking space, with the option for additional parking negotiable. Small pets are welcome with prior approval from the trustees.

Monthly Bond Repayment

Calculated over 20 years at 11% with no deposit.

R8,051.07

Bond Costs

These calculations are only a guide. Please ask your conveyancer for exact calculations

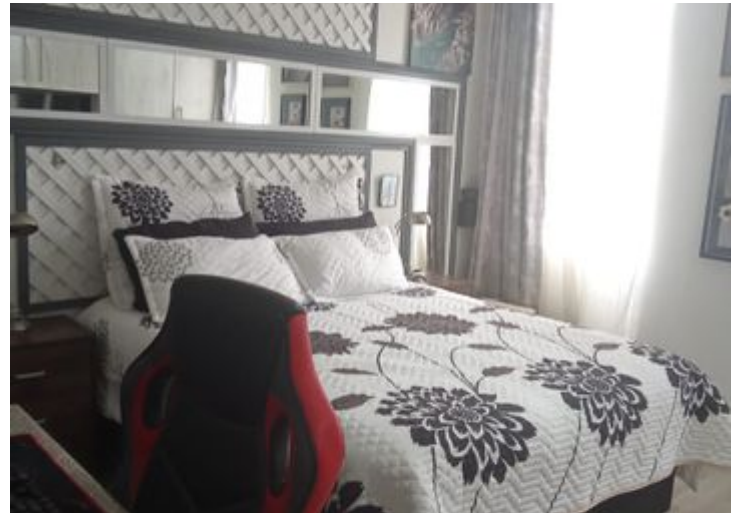
R19,565.00

Transfer Costs

R25,898.00

Monthly Rates

R449



INTERIOR

Bedrooms	2
Bathrooms	2
Kitchens	1
Recep. Rooms	2
Furnished	Yes

EXTERIOR

Carports / Parkings	2
Security	Yes
Dom. Accom.	0
Pool	Yes
Views	Yes

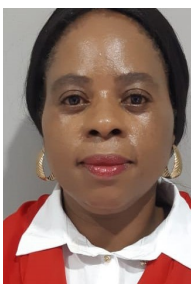
SIZES

Floor Size	94m ²
Land Size	-



Pumla Ndabeni
Candidate Property Practitioner

076 400 1569
pumla@finehome.co.za



Dikeledi Mohlala
Property Practitioner

073 077 2598
dikeledi@finehome.co.za