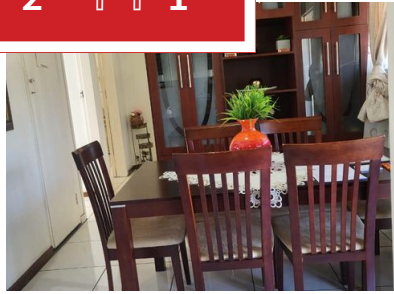
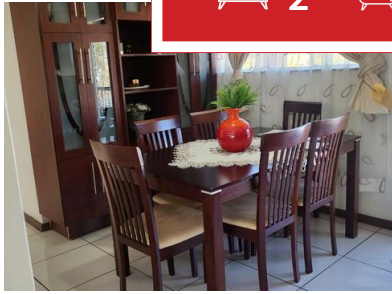
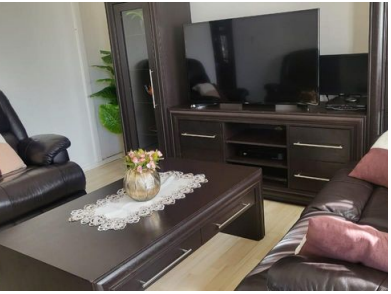




 2
  2
  1



BEAUTIFUL APARTMENT/FLAT FOR SALE IN HORISON VIEW.

This lovely unit offers 2 bedrooms all tiled floors.
 2 bathrooms ,shower,bath,basin and toilet and guest toilet.
 Kitchen with built -in cupboards.
 Open plan dining room area, lounge/TV room all tiled floors that leads to balcony.
 The unit has one garage and parking space for visitors.
 Close to all amenities,easy to access transport.
 For viewing whatsapp Agent.

Monthly Bond Repayment

Calculated over 20 years at 11% with no deposit.

R6,502.79

Bond Costs

These calculations are only a guide. Please ask your conveyancer for exact calculations

R17,680.00

Transfer Costs

R23,730.00

Monthly Rates

-



INTERIOR

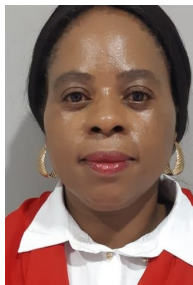
Bedrooms 2
 Bathrooms 2
 Kitchens 1
 Recep. Rooms 2
 Furnished No

EXTERIOR

Carports / Parkings 1
 Security Yes
 Dom. Accom. 0
 Pool Yes
 Views Maybe

SIZES

Floor Size 80m²
 Land Size 794,200m²



Dikeledi Mohlala

Property Practitioner

073 077 2598

dikeledi@finehome.co.za