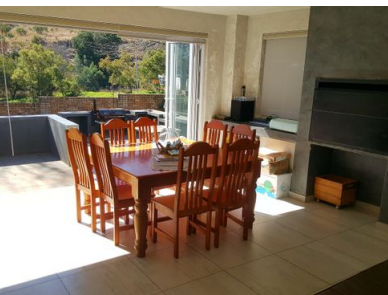


 **6**
 **4**
 **2**



Large family home with 2 flats

Main house with 4 Bedrooms and 2 Bathrooms, lounge and dining room. Easy to work kitchen. Enclosed patio with build in braai. Pool. Invertor, solar and gas geysers. 2 Flats that can be converted into one large flat.

Monthly Bond Repayment

Calculated over 20 years at 11% with no deposit.

R28,385.18

Bond Costs

These calculations are only a guide. Please ask your conveyancer for exact calculations

R40,300.00

Transfer Costs

R137,887.00

Monthly Rates

-



INTERIOR

Bedrooms 6
 Bathrooms 4
 Kitchens 1
 Recep. Rooms 2
 Furnished Yes

EXTERIOR

Carports / Parkings 3
 Security Yes
 Dom. Accom. 0
 Pool Yes
 Views Yes

SIZES

Floor Size -
 Land Size -



Wayne Winston Calverley
 Candidate Property Practitioner

079 525 0911
 wayne@finehome.co.za