

 **3**
 **2**
 **2**



3 Bedroom Appartment at Laser Park,Honeydew

- These Property offers the following
- 3 spacious Bedrooms
- Open plan Lounge
- Kitchen with build in cub boards
- 2 Bathroom with toilet other with shower and toilet En suit
- Garden
- Parking
- Secure yard with 24hrs security

Monthly Bond Repayment

Calculated over 20 years at 11% with no deposit.

R8,773.60

Bond Costs

These calculations are only a guide. Please ask your conveyancer for exact calculations

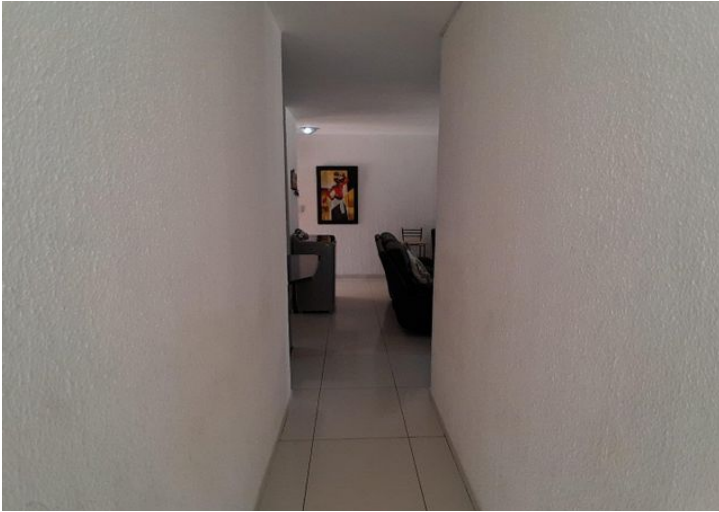
R21,450.00

Transfer Costs

R28,244.00

Monthly Rates

-



INTERIOR

Bedrooms 3
 Bathrooms 2
 Kitchens 1
 Recep. Rooms 0
 Furnished Yes

EXTERIOR

Carports / Parkings 0
 Security Maybe
 Dom. Accom. 0
 Pool Yes
 Views Maybe

SIZES

Floor Size -
 Land Size -



Professor More
 Candidate Property Practitioner

082 621 6754
 professor@finehome.co.za