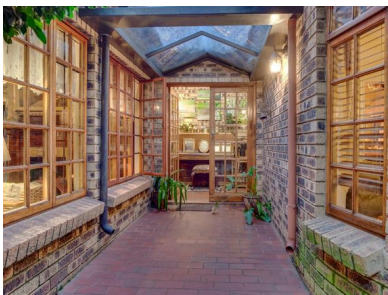


 **4**
 **3**
 **4**



worth every cent

This property is ideal for anyone torn between their love for living in nature and at the same time enjoying all the comforts living in a desired area that comes with the amenities associated with maintained urban areas. This property is on the border of the National Botanic Gardens near Roodepoort and just a stonethrow away from the "Muldersdrift Se Loop" the stream that runs through the Boltanical gardens. All of this and with quick acces to major roads and highways. The property also have complete one bedroom flat that forms part of the 900 square meter buildings on the property - this can serve as accommodation for a teen or an elderly couple that needs supervision but still enjoys some privacy. The solar system is sufficient to effectively supply the current power for house but also has a back up Pre paid system. This lovely property comes with the following features 4 bedrooms. 3 bathrooms. Laundry. Scullery. Library. Study. Tv room. Lounge, Dining, Kitchen and Pantry. 1 x flat with gas stove. Full kitchen lounge/dining. 1 bedroom with bathroom. 1 x flatlet/ servants quarters.

Monthly Bond Repayment

R72,253.19

Calculated over 20 years at 11% with no deposit.

Bond Costs

R70,535.00

These calculations are only a guide. Please ask your conveyancer for exact calculations

Transfer Costs

R633,766.00

Monthly Rates

-



INTERIOR

Bedrooms	4
Bathrooms	3
Kitchens	1
Recep. Rooms	2
Furnished	Yes

EXTERIOR

Carports / Parkings	10
Security	Yes
Dom. Accom.	0
Pool	Yes
Views	Yes

SIZES

Floor Size	900m ²
Land Size	1Ha



JP Henning
Candidate Property Practitioner

066 220 5964
jp@finehome.co.za