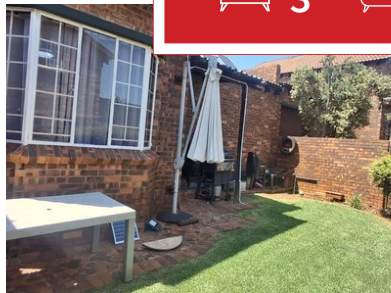
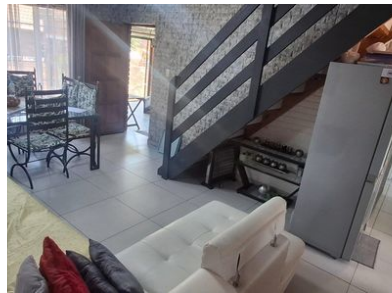
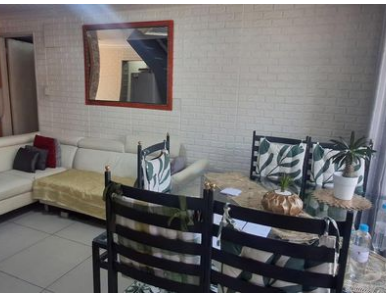


 3
  2
  2



3 Bedroom Townhouse in Weltevreden Park

Modern Facebrick Gem in Secure Complex

Discover this pristine lock-up-and-go home nestled in a highly desirable complex on Rooitou Street, just steps from a peaceful park.

Solar power!! Communal Pool

Experience sophistication and style in this fully furnished 3-bedroom townhouse, where every feature is meticulously designed for luxury and comfort.

Highlights of this exquisite family home include:

The complex features impeccable maintenance and a swimming pool
With convenient access to Beyers Naudé and proximity to nearby parks, this home offers modern convenience, stunning design, and a secure lifestyle!!

Extras: Solar for Energy efficiency

Contact me today to arrange a viewing

Monthly Bond Repayment

Calculated over 20 years at 11%
with no deposit.

R12,179.82

Bond Costs

These calculations are only a guide. Please ask
your conveyancer for exact calculations

R25,220.00

Transfer Costs

R32,749.00

Monthly Rates

R977



INTERIOR

Bedrooms 3
 Bathrooms 2
 Kitchens 1
 Recep. Rooms 0
 Furnished Yes

EXTERIOR

Carports / Parkings 0
 Security Maybe
 Dom. Accom. 0
 Pool Yes
 Views Maybe

SIZES

Floor Size -
 Land Size 112m²



Anina Jardim
 Agent
078 740 2617
 anina@finehome.co.za

