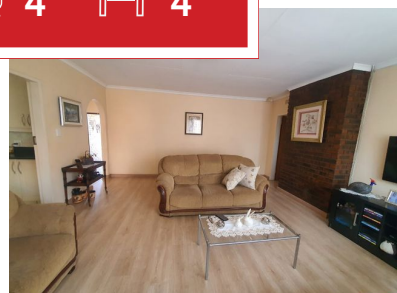
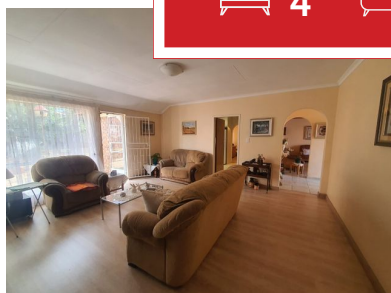


 **4**
 **4**
 **4**



## Stunning family home with full flatlet and borehole

This four bedroom house is well located in Wilro Park and consists of a low maintenance facebrick house with a full flatlet with its own entrance.

The garden is beautifully tranquil and landscaped and also a strong borehole to serve all your needs. A definite requirement in today's life.

This property is suitable for the bigger family who enjoy entertaining lots of people. For this purpose the thatch lapa with a built-in braai is ideally situated on the huge stand.

It has the most beautiful kitchen with a laundry/scullery and lots of cupboards. The granite tops and nook is well designed and installed, together with lots of electrical points for all your appliances and equipment. All four bedrooms are huge and sunny and all the bathrooms are modern and upgraded.

### Monthly Bond Repayment

Calculated over 20 years at 11% with no deposit.

R23,224.24

### Bond Costs

These calculations are only a guide. Please ask your conveyancer for exact calculations

R36,530.00

### Transfer Costs

R95,138.00

### Monthly Rates

R1,003



**INTERIOR**

Bedrooms 4  
 Bathrooms 4  
 Kitchens 1  
 Recep. Rooms 2  
 Furnished Yes

**EXTERIOR**

Carports / Parkings 14  
 Security Yes  
 Dom. Accom. 1  
 Pool Yes  
 Views Yes

**SIZES**

Floor Size 420m<sup>2</sup>  
 Land Size 1,780m<sup>2</sup>



**Alf Prinsloo**  
 Property Practitioner

Registered with PPRA (FFC 2023326287)

**082 497 5435**  
 alfjoeye@lantic.net



**Joey Prinsloo**  
 Property Practitioner

Registered with PPRA (FFC 2023326275)

**084 602 8836**  
 joey@finehome.co.za