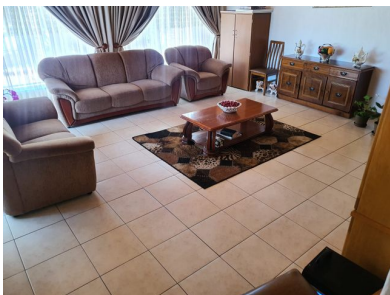


3 2 2



New listing! Spanish style beauty for the bigger family in Wilropark

This split level family home is situated on a 1148m2 stand and is fully landscaped. There is a loft which could be a 4th bedroom or a study with views. Spiral staircase well designed and erected.

All three bedrooms are sunny and both bathrooms are modern and clean.

There is a nook kitchen with granite tops and a scullery/laundry with lots of built-in cupboards and electrical connection points for all equipment and appliances.

All three reception areas are huge and spacious.

The backdoor in the kitchen leads onto an enclosed verandah and is ideal for entertaining. At the back of the house there are two garages with two carports and space for another 6 vehicles.

Monthly Bond Repayment

Calculated over 20 years at 11% with no deposit.

R17,237.55

Bond Costs

These calculations are only a guide. Please ask your conveyancer for exact calculations

R30,875.00

Transfer Costs

R53,239.00

Monthly Rates

R980



INTERIOR

Bedrooms 3
 Bathrooms 2
 Kitchens 1
 Recep. Rooms 2
 Furnished Yes

EXTERIOR

Carports / Parkings 8
 Security Yes
 Dom. Accom. 0
 Pool Yes
 Views Yes

SIZES

Floor Size 240m²
 Land Size 1,148m²



Alf Prinsloo
 Property Practitioner

Registered with PPRA (FFC 2023326287)

082 497 5435
 alfjoey@lantic.net



Joey Prinsloo
 Property Practitioner

Registered with PPRA (FFC 2023326275)

084 602 8836
 joey@finehome.co.za

