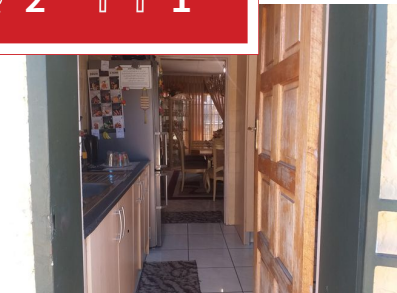
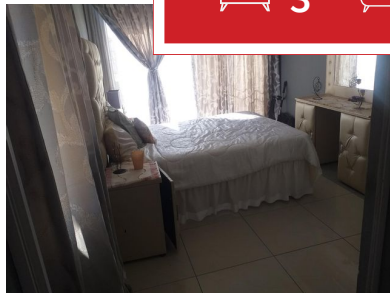
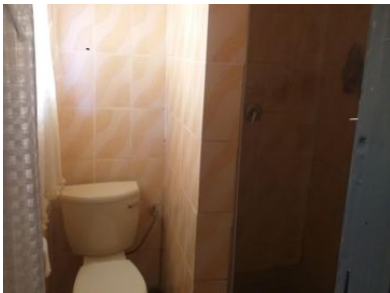




3 2 1



## Family home for sale in WITPOORTJIE

spacious 3 bedrooms, 2 bathrooms, kitchen, dining room, lounge, outbuilding Lapa, flatlet and 3 Wendy houses, cameras and beams, 4 carport

### Monthly Bond Repayment

Calculated over 20 years at 11% with no deposit.

R18,579.39

### Bond Costs

These calculations are only a guide. Please ask your conveyancer for exact calculations

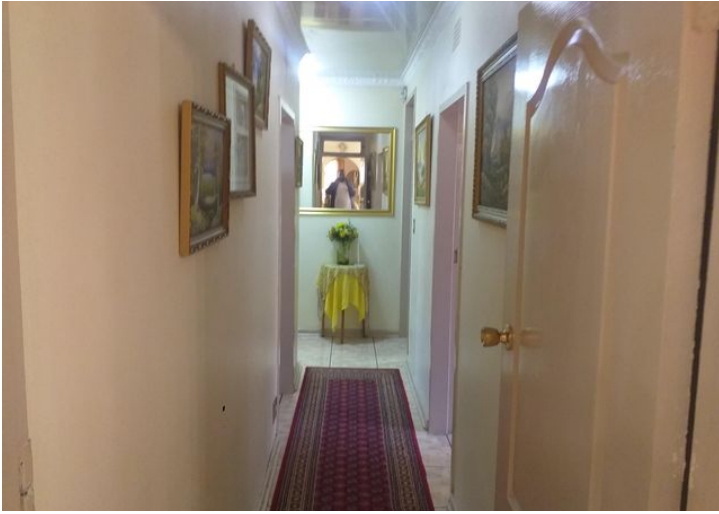
R30,875.00

### Transfer Costs

R61,039.00

### Monthly Rates

-



### INTERIOR

Bedrooms 3  
 Bathrooms 2  
 Kitchens 1  
 Recep. Rooms 2  
 Furnished Yes

### EXTERIOR

Carports / Parkings 4  
 Security Yes  
 Dom. Accom. 0  
 Pool Yes  
 Views Yes

### SIZES

Floor Size -  
 Land Size -



**Lufuno Ngoma**  
 Candidate Property Practitioner

**076 104 3290**  
 lufuno@finehome.co.za