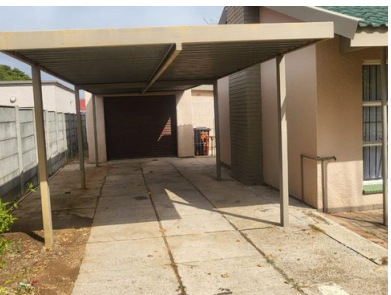




3 2 1



## STUNNING FAMILY HOME FOR SALE IN WITPOORTJIE.

This stunning home offers 3 large bedrooms with built-in cupboards all tiled floors.  
 2 Full bathrooms,bath,shower,basin and toilet one is the main en-suite.  
 Kitchen with built- in cupboards.  
 Open plan dining room and lounge all tiled floors  
 Single garage with carport and more space of parking.  
 Lovely big garden.  
 It has domestic room and separate.  
 Close to all amenities.  
 For exclusive viewing ypu may contact me directly/whatsapp.

### Monthly Bond Repayment

Calculated over 20 years at 11% with no deposit.

R12,334.65

### Bond Costs

These calculations are only a guide. Please ask your conveyancer for exact calculations

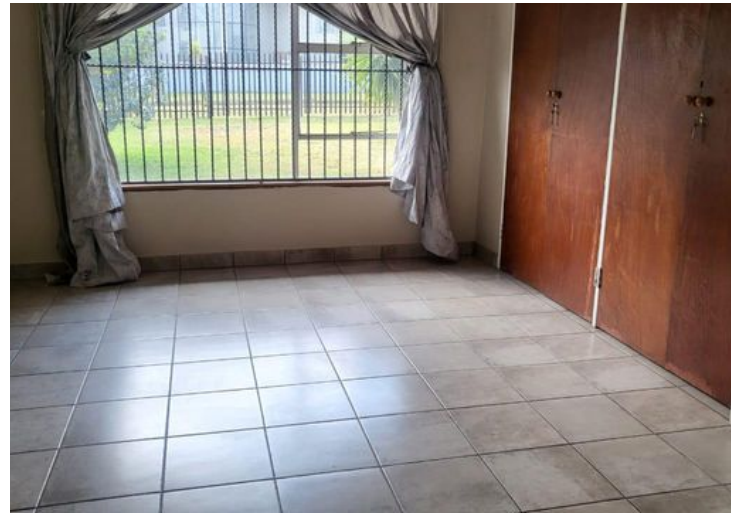
R25,220.00

### Transfer Costs

R32,749.00

### Monthly Rates

-



### INTERIOR

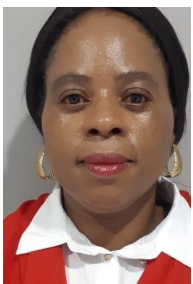
Bedrooms	3
Bathrooms	2
Kitchens	1
Recep. Rooms	2
Furnished	No

### EXTERIOR

Carports / Parkings	2
Security	No
Dom. Accom.	1
Pool	Yes
Views	Maybe

### SIZES

Floor Size	-
Land Size	1,115m <sup>2</sup>



**Dikeledi Mohlala**

Property Practitioner

**073 077 2598**

dikeledi@finehome.co.za