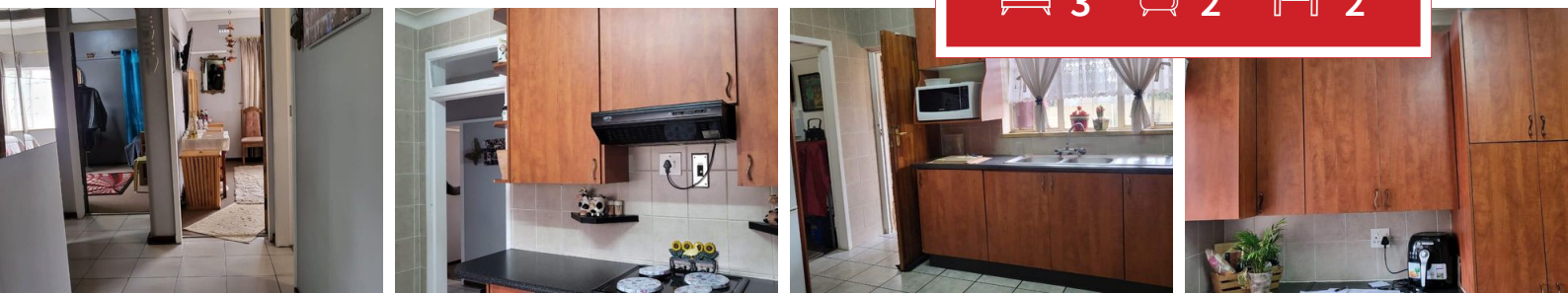




3 2 2



LARGE FAMILY HOME WITH FLATLET AND POOL FOR SALE IN WITPOORTJIE.

This home has all you need its offers 3 bedrooms with built-in cupboards.
 2 bathrooms shower,bath,basin and toilet.
 Kitchen with ample space cupboards and laundry area.
 Open plan dining room area and living room with tiled floors.
 This property includes flatlet with kitchen ,lounge,bedroom,and bathroom.
 It has large garden and lapa with built-in braai area with pool.
 Double garage and carport,
 For viewing whatsapp me.

Monthly Bond Repayment

R13,934.54

Calculated over 20 years at 11% with no deposit.

Bond Costs

R27,105.00

These calculations are only a guide. Please ask your conveyancer for exact calculations

Transfer Costs

R39,117.00

Monthly Rates

-



INTERIOR

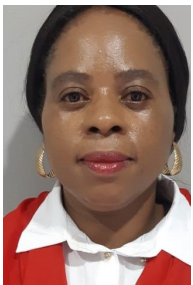
Bedrooms 3
 Bathrooms 2
 Kitchens 1
 Recep. Rooms 0
 Furnished Yes

EXTERIOR

Carports / Parkings 0
 Security Maybe
 Dom. Accom. 0
 Pool Yes
 Views Maybe

SIZES

Floor Size -
 Land Size 1,115m²



Dikeledi Mohlala

Property Practitioner

073 077 2598

dikeledi@finehome.co.za



Juliet Mxhakaza

Candidate Property Practitioner

072 149 1015

juliet@finehome.co.za

