



 **6**
 **3**
 **0**

## six bedroom house in Embalenhle

welcome to your new house at Embalenhle, you do not want to miss this house with six bedrooms including three main bedrooms.

From the moment you enter, this house is nothing short of amazing. The spacious floor plan and outdoor living space are perfect for interesting guest.

It also come with a carpot that can fit two cars which will give plenty of space to fit your vehicle. You are a short walk to the public school and less than a kilo from Emba mall which include shopping and somuch more.

### Monthly Bond Repayment

Calculated over 20 years at 11% with no deposit.

R12,799.14

### Bond Costs

These calculations are only a guide. Please ask your conveyancer for exact calculations

R27,105.00

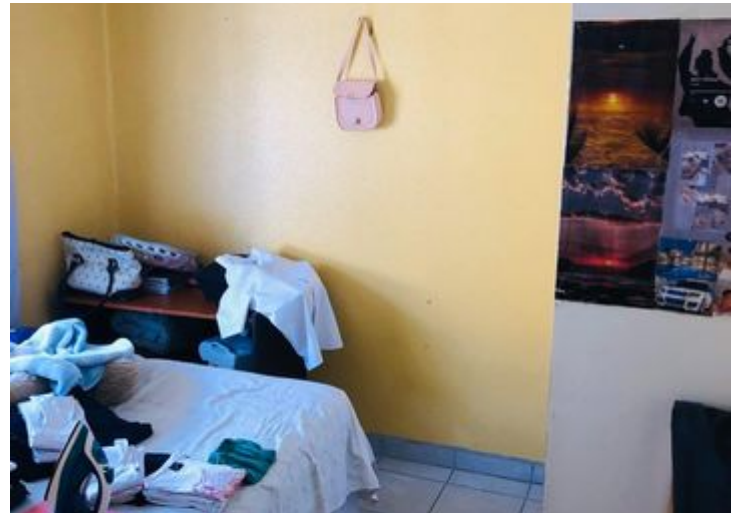
### Transfer Costs

R35,817.00

### Monthly Rates

R600





**INTERIOR**

Bedrooms 6  
 Bathrooms 3  
 Kitchens 3  
 Recep. Rooms 0  
 Furnished Yes

**EXTERIOR**

Carports / Parkings 0  
 Security Yes  
 Dom. Accom. 0  
 Pool Yes  
 Views Yes

**SIZES**

Floor Size 20m<sup>2</sup>  
 Land Size 1,100m<sup>2</sup>



**Nomphendulo Mahlobo**  
 Agent

**076 598 9889**  
 nomphendulo@finehome.co.za

