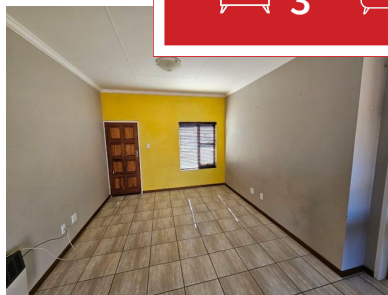




 **3**
 **2**
 **2**



## A PERFECT HOME FOR YOUR PERFECT FAMILY!

Safety and security is a number one priority in this complex. This beautiful home is situated in a lock up and go complex with 24/7 security guards.

The property boasts open plan kitchen and sitting area, 3 bedrooms and 2 bathrooms. All bedrooms have built in cupboards with enough space.

The property has double garage with easy access to the back yard.

Terra nova is better known as a no load shedding area, so don't waste time, just use the details below to get in contact with me to view this lovely home!

### Monthly Bond Repayment

Calculated over 20 years at 11% with no deposit.

R12,902.35

### Bond Costs

These calculations are only a guide. Please ask your conveyancer for exact calculations

R27,105.00

### Transfer Costs

R36,117.00

### Monthly Rates

R1,500



**INTERIOR**

Bedrooms 3  
 Bathrooms 2  
 Kitchens 0  
 Recep. Rooms 0  
 Furnished Yes

**EXTERIOR**

Carports / Parkings 0  
 Security Yes  
 Dom. Accom. 0  
 Pool Yes  
 Views Yes

**SIZES**

Floor Size -  
 Land Size -



**Mmapaseka Job**  
 Agent

**076 863 3393**  
 mmapaseka@finehome.co.za

