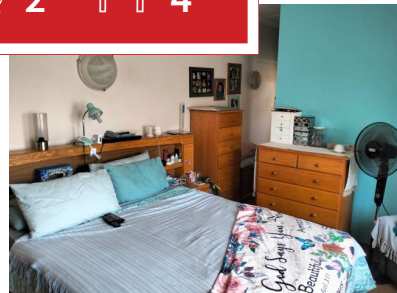
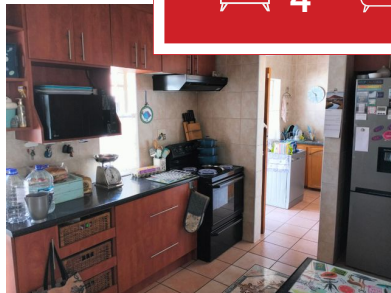
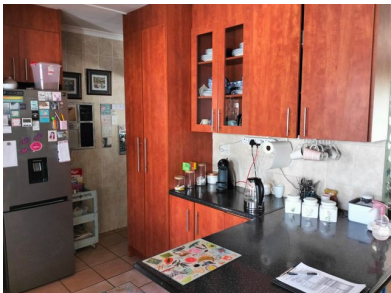




 4
  2
  4



4 Bedroom home for sale in Casseldale, Spings.

This home is located in the leafy area of Casseldale, offer 4 bedrooms with built in cupboards; 2 bathrooms including a shower, kitchen with extractor fan open planned to dining room, Tiled lounge and dining room, 4 garages, one is a tandem and the other is a double, 2 carports. 2 bedroomed flatlet with lounge bathroom and kitchen separate from main house, Outside laundry and toilet. Very big stand. Come and have a look and make your offer today!!

Monthly Bond Repayment

R16,463.40

Calculated over 20 years at 11% with no deposit.

Bond Costs

R28,990.00

These calculations are only a guide. Please ask your conveyancer for exact calculations

Transfer Costs

R48,635.00

Monthly Rates

-



INTERIOR

Bedrooms 4
 Bathrooms 2
 Kitchens 1
 Recep. Rooms 2
 Furnished Maybe

EXTERIOR

Carports / Parkings 2
 Security Yes
 Dom. Accom. 0
 Pool Yes
 Views Maybe

SIZES

Floor Size -
 Land Size 2,234m²



Lizette Kilian
 Agent

+27748664229
 thyscamperssprings1@gmail.com