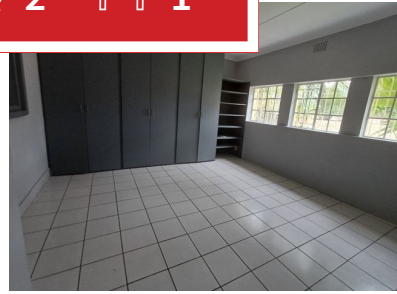


 **3**
 **2**
 **1**



Lovely 3 bedroom home close to schools!

The whole house is tiled and freshly painted. This home is located in the sought after area of Petersfield offer, spacious bedrooms with built-in cupboards and bathroom with bath, toilet and basin, Separate 3rd bedroom has an outside door and an en-suite bathroom with shower, Open plan lounge and dining room with a fireplace, fitted kitchen with a stove and washing machine connection, Outside entertainment area under roof with built-in braai and cupboards. Flatlet offer One bedroom with built-in cupboards, kitchen, living area and a bathroom with shower. Big double garage and Double carports. Don` t delay, call me today to view.

Monthly Bond Repayment

Calculated over 20 years at 11% with no deposit.

R12,902.35

Bond Costs

These calculations are only a guide. Please ask your conveyancer for exact calculations

R27,105.00

Transfer Costs

R36,117.00

Monthly Rates

R1,600



INTERIOR

Bedrooms	3
Bathrooms	2
Kitchens	1
Recep. Rooms	3
Furnished	Maybe

EXTERIOR

Carports / Parkings	1
Security	Yes
Dom. Accom.	0
Pool	Yes
Views	Maybe

SIZES

Floor Size	1m ²
Land Size	761m ²



Lizette Kilian

Agent

+27748664229

thyscampersprings1@gmail.com