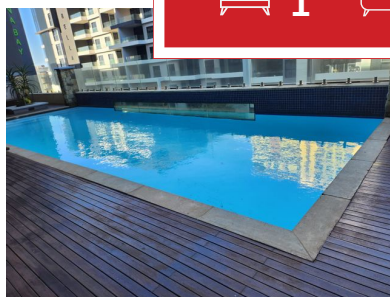
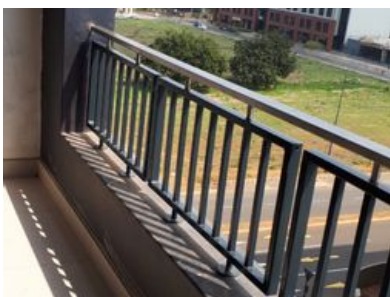




 1
  1
  0



## Beautiful apartment for sale in Umhlanga Ridge

Fine Home Pearl presents to you this Cosy 1 bedroom apartment on sale at The Madison in Umhlanga Ridge.

As you enter you will find a beautiful fully fitted kitchen and open plan living area. The bedroom has an ensuite and is spacious and well lit as it has a sliding door leading onto the balcony.

The simply elegant apartment is located within the pristine and sought after building called the madison. The building is well secured with underground parking ,a pool ,gym and sauna. It is located directly across Busamed hospital and a 5 minute walk away from Gateway and many other local attractions. It is perfect for that lock up and go lifestyle.

Call now to book a viewing!

### Monthly Bond Repayment

Calculated over 20 years at 11% with no deposit.

R13,315.23

### Bond Costs

These calculations are only a guide. Please ask your conveyancer for exact calculations

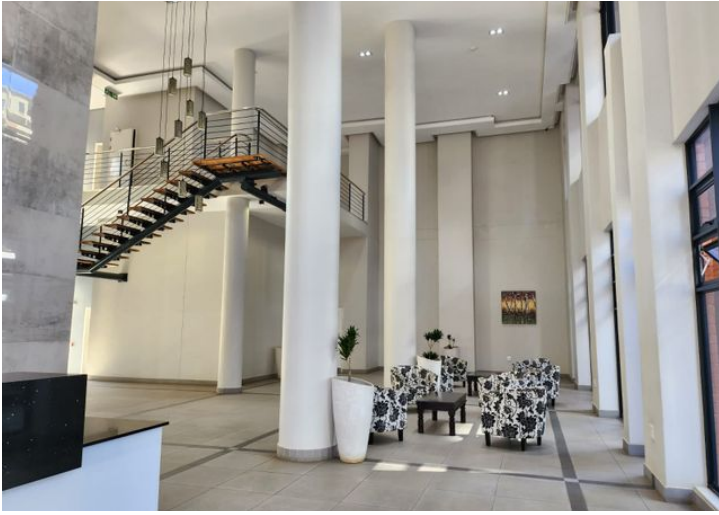
R27,105.00

### Transfer Costs

R37,317.00

### Monthly Rates

R1,500



### INTERIOR

Bedrooms 1  
 Bathrooms 1  
 Kitchens 1  
 Recep. Rooms 1  
 Furnished Yes

### EXTERIOR

Carports / Parkings 1  
 Security Yes  
 Dom. Accom. 0  
 Pool Yes  
 Views Yes

### SIZES

Floor Size 47m<sup>2</sup>  
 Land Size -



**Reidal Rambaros**

Agent

**066 060 5907**

reidal@finehome.co.za