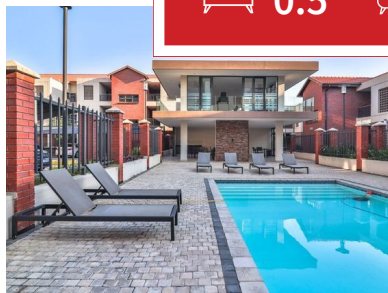
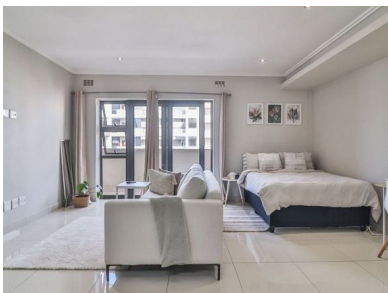
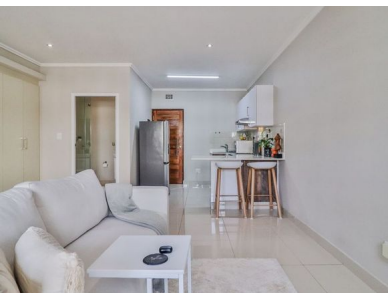


0.5 
 1 
 0



## A studio apartment for sale in Umhlanga Ridge

Fine Home Pearl presents to you a modern studio apartment in the heart of Umhlanga. This lovely penthouse has excellent security which is access controlled and has secure parking. The amenities includes a sparkling pool, gym and seating area.

At the entrance of this stunning apartment is a fully fitted kitchen with stylish white cupboards. A bedroom with elegant white built-in cupboards and a spacious lounge area with a sliding glass door leading to the balcony which is perfect for sunrises and sunsets.

This simple and comfortable apartment is at walking distance to Busamed hospital, Eduvos campus, Park Square and it's just five minutes away from Gateway. It has easy access to highways. Good schools, restaurants and other local attractions are also very close. The beach is just ten minutes away.

### Monthly Bond Repayment

Calculated over 20 years at 11% with no deposit.

R12,386.26

### Bond Costs

These calculations are only a guide. Please ask your conveyancer for exact calculations

R25,220.00

### Transfer Costs

R32,749.00

### Monthly Rates

R1,000



### INTERIOR

Bedrooms	0.5
Bathrooms	1
Kitchens	1
Recep. Rooms	0.5
Furnished	Yes

### EXTERIOR

Carports / Parkings	1
Security	Yes
Dom. Accom.	0
Pool	Yes
Views	Yes

### SIZES

Floor Size	47m <sup>2</sup>
Land Size	-



**Faheema Kader**  
Candidate Property Practitioner

**076 997 6167**  
faheema@finehome.co.za