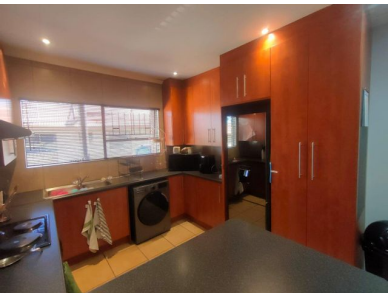




2 2 1



Charming Town House in Prime Location

Features:

- Face Brick Town House in a sought-after area
- 2 bedrooms, including 1 en-suite with huge shower, toilet, and basin (fully tiled)
- Guest bathroom with bath, toilet, and basin (fully tiled)
- Open plan TV room
- Cherry wood kitchen with under counter oven and hob
- Enclosed patio with security gates
- Beautiful small enclosed garden
- 1 remote garage and carport

This charming facebrick town house is located in one of our top areas, offering a comfortable and convenient living space.

Don't miss out on the opportunity to own this well-maintained town house in a prime location. Contact us now to schedule a viewing and make it your new home!

Monthly Bond Repayment

Calculated over 20 years at 11%
with no deposit.

R11,302.46

Bond Costs

These calculations are only a guide. Please ask
your conveyancer for exact calculations

R25,220.00

Transfer Costs

R32,749.00

Monthly Rates

R650



INTERIOR

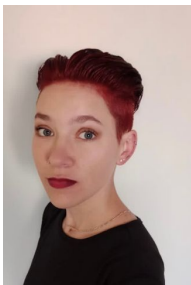
Bedrooms 2
 Bathrooms 2
 Kitchens 0
 Recep. Rooms 0
 Furnished Yes

EXTERIOR

Carports / Parkings 0
 Security Yes
 Dom. Accom. 0
 Pool Yes
 Views Yes

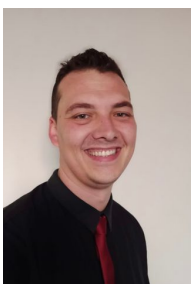
SIZES

Floor Size -
 Land Size -



Kelly De Bruyn
 Candidate Property Practitioner

071 140 3846
kelly@finehome.co.za



Oscar Otto
 Candidate Property Practitioner

072 703 7199
oscar@finehome.co.za