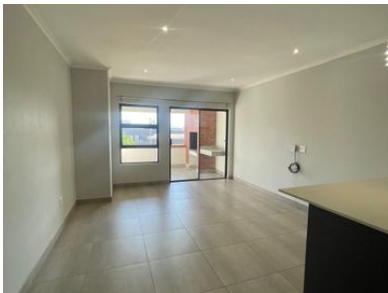




 2
  2
  0



## BEAUTIFUL 2 BEDROOM APARTMENT IN THE SECURE ZALAMIA ESTATE!

Spacious 2 bedroom, 2 bathroom home with the main bathroom being en-suite. Open plan living area with a built-in braai on the patio.

Safety is a priority in this complex and has cameras with a electric fence. There is a communal swimming pool and a jungle gym for the kids.

Contact us now to schedule your appointment.

### Monthly Bond Repayment

Calculated over 20 years at 11% with no deposit.

### Bond Costs

These calculations are only a guide. Please ask your conveyancer for exact calculations

### Transfer Costs

### Monthly Rates



### INTERIOR

Bedrooms	2
Bathrooms	2
Kitchens	1
Recep. Rooms	1
Furnished	Yes

### EXTERIOR

Carports / Parkings	1
Security	Yes
Dom. Accom.	0
Pool	Yes
Views	Yes

### SIZES

Floor Size	90m <sup>2</sup>
Land Size	-



**Lourens Rautenbach**

Broker Manager

**076 316 4607**

[lourens@finehome.co.za](mailto:lourens@finehome.co.za)