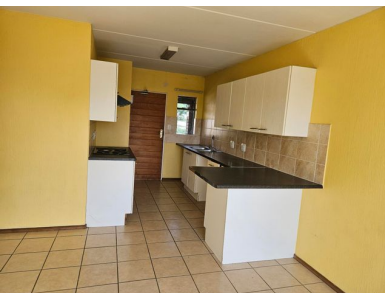




2 1 0



2 Bed, 1 Bath unit in Weltevredenpark

Lovely 2 Bedroom unit.

1 Full Bathroom

Kitchen with space for Fridge & Washing Machine

Open plan Lounge, Kitchen, Dining area.

Available Immediately.

Monthly Rental R7 000.00 plus Utilities

Deposit R7 000.00

Close to Clearwater Mall, Trade Centre on Hendrik Potgieter Street.

Close to Schools.

Close to access to the Highway.

Monthly Bond Repayment

Calculated over 20 years at 11%
with no deposit.

Transfer Costs

Bond Costs

These calculations are only a guide. Please ask
your conveyancer for exact calculations

Monthly Rates



INTERIOR

Bedrooms	2
Bathrooms	1
Kitchens	1
Recep. Rooms	1
Furnished	Yes

EXTERIOR

Carports / Parkings	1
Security	Yes
Dom. Accom.	0
Pool	Yes
Views	Yes

SIZES

Floor Size	-
Land Size	-



Elmarie Potgieter
Agent

083 600 7037
elmarie@finehome.co.za